



# Thank You to Our Sponsors




## About the Garden

- Planted in 2008 by Joe Eades with many new plants added over the years
- Primarily volunteer-maintained
- National Wildlife Federation "Certified Wildlife Habitat"
- Official Monarch Larva Monitoring Project site

*The garden is open to visitors at no charge from dawn to dusk, 365 days a year. When the Nature Center is open, inquire within about questions or opportunities to support our demonstration garden.*

 7030 Garrison St  
Arvada, CO 80004

 720-898-7405

 majesticviewnc@arvada.org

 majesticviewnc.org

# Majestic View Garden

PLANT GUIDE & MAP



**MAJESTIC VIEW**  
NATURE CENTER

## Volunteer

Learn how to volunteer and apply online at [majesticviewnc.org](http://majesticviewnc.org)



Certified Wildlife Habitat





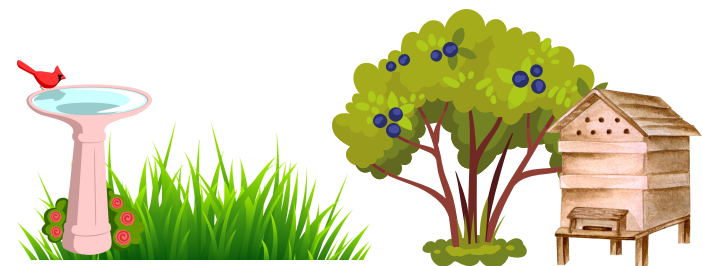


## WHAT MAKES A HABITAT GARDEN?

Creating a habitat garden supports wildlife, fosters a closer relationship between you & nature, plus it can be lower maintenance.

### A HABITAT NEEDS:

- **FOOD** - native plants with berries, seeds, nectar & more tasty treats for wildlife
- **WATER** - drinking, bathing &/or breeding, a fountain or even a mud puddle will do
- **SHELTER** - shade or covering from weather &/or predators
- **PLACES TO RAISE YOUNG** & reproduce - mature trees, nesting boxes, host plants for caterpillars & more
- Natural, **SUSTAINABLE PRACTICES**
- **SUPPORT**- Educate your neighbors with signs and share your "wild" garden seeds with friends and family



RABBITBRUSH



ECHINACEA



SALVIA



GOLDENROD



CHOCHECHERRY

## IMPORTANT POLLINATORS

By planting flowers in a variety of colors and shapes, as well as selecting plants that bloom at different times in the season, you'll attract lots of **HAPPY POLLINATORS!** Selecting **NATIVE** plants will ensure you are helping the nearly 1,000 species of Coloradan bees and more! Pollinators are to thank for 1 in 3 bites of food we eat. Take a look at some of our favorite habitat plants above.

## XERIC ISN'T "ZERO"



Xeriscaping involves a diverse combination of water-wise landscape techniques including low-water plants ("Plant Select" label is great for our region) in lean, well-drained soil, surface materials that keep the soil cool (i.e. mulch or pea gravel), efficient irrigation and minimal, strategic use of turf grass. Xeriscaping is NOT a monoculture or simply rocks with a few sparse shrubs; it's a diverse, low maintenance, sustainable garden solution.



APACHE PLUME



AGASTACHE



PANCHITO MANZANITA



PENSTEMON



DELOSPERMA



# Garden Map



Garrison Street Entrance

Cattail Trail



## Plant Zone Key

- 1 WATER FEATURE
- 2 BIRD AND DRY SHADE GARDEN
- 3 PERENNIAL BORDER
- 4 ORNAMENTAL GRASSES & SHRUBS
- 5 XERIC SUCCULENTS
- 6 FESCUE TURF
- 7 URBAN GARDEN
- 8 POLLINATOR GARDEN
- 9 HABITAT HEDGEROW
- 10 NATIVE GRASSES

## THINGS TO DO WITH THE FAMILY

- **Take a sensory walk** - what do you see (colors, critters, near vs. far), hear (natural vs. unnatural), smell & feel (textures)?
- **Snap a photo in our farmer photo frame**
- **Bingo scavenger hunt** - if there's an active Bingo, you can find copies in the holder by the Nature Center's front door or on online
- **Nature mandalas** - collect loose leaves, twigs, etc. from the ground & create a temporary art piece by laying them out in patterns and shapes on the ground

### Pro Tip!

Many of the plants have a label near their base to clue you in to it's common and scientific name.



Visit the QR to find full plant list and inventory

# Things to See



## MILKWEED

Native Milkweed species attract a variety of pollinators AND are the ONLY plant that Monarch larva will eat, supporting this endangered species.



## POLLINATOR PARADISE HOTEL

Solitary bees & other pollinating insects need places to nest & shelter. At the Pollinator Paradise Hotel, small holes and gaps in the wood provide that safe, dry place. Do you see holes filled with leaves or mud? That means there's a resident bee nest inside!



## MORMON TEA

This spikey, reed-like plant provides a unique visual and texture to your native garden.



## BIRDS, BERRIES & NUTS

We commonly see birds, like the Spotted Towhee, scurrying under this corner of the garden where there is an abundance of berries and nuts provided by Rocky Mountain Juniper, Shrub Honeysuckle & various Oak trees.



## RUSSIAN SAGE

Provides a fantastic, herbaceous scent, delicate purple hue, & has busy bees visiting all the time.



## APPLE TREE

Many critters, such as deer, raccoon, coyote, & rabbits, like to visit for the tasty fruit!



## FARMER PHOTO FRAME

## ACTIVITY CIRCLE

A modest portion of fescue lawn allows for activity space within the garden for programs such as Nature Storytime, Meditation & more!

## WATER FOUNTAIN

Not only does a water feature provide a relaxing ambience, but it offers a bathing and drinking spot for the wildlife that call this garden home.



Majestic View  
Nature Center

## Pollinator Key

- Attracts Butterflies/Moths
- Caterpillar Habitat
- Bee Friendly
- Attracts Birds
- Beneficial Insect Habitat

To learn more about pollinators, visit our website at [majesticviewnc.org](http://majesticviewnc.org)