



MAJESTIC VIEW
NATURE CENTER

January 1-December 31, 2023

Annual Report



Table of Contents

- | | |
|---|------------------------------|
| 1 | Year-End Review |
| 3 | Statistics and Attendance |
| 4 | Grants, Donations, & In-Kind |
| 6 | Financials |
| 7 | Water Education Report |
| 8 | Our Team |
| 9 | Our Partners |

2023 Year In Review

Programs and Attendance

Majestic View provided 388 functions to the community, serving 13,449 people in attendance. Over 1,000 people attended three large events at the Nature Center: an Earth Day Celebration, a Pollinator Garden Tour, and World Migratory Bird Day. We look forward to continuing to provide events like these which focus on stewardship, environmental learning, and community connections.

We also served 1,880 students through school field trips and outreach programs, 14% of which were grant sponsored as Title 1/low-income schools.

Updates Around The Nature Center

In 2023 we continued to update exhibits in line with our exhibit plan, including the additions to our wetland and riparian-themed areas. With the help of many volunteers, we have completed the beaver lodge, various carpentry projects, more murling and decals, vent insulation, and aquarium enrichment updates. Our team has also created a garden map brochure with native plant recommendations, a Spanish translation brochure for exhibits, and repaired many of our taxidermy mounts that travel for programs and events.



5165 WALK IN VISITORS

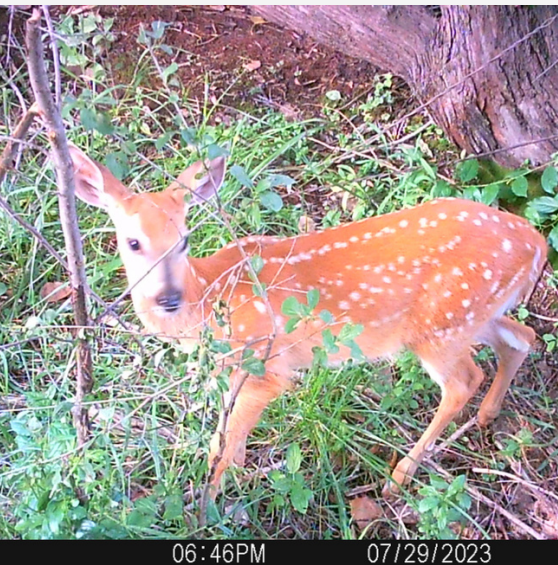
Updates Around The Park

With the help of many volunteers we've been able to establish the Fox Trail loop, repair soft trails after the wet spring, remove hazards and debris around the park, remove invasive species, mulch foot path trails, maintain the demonstration garden, collect thousands of native seeds for our fall giveaway, and talk with people on the trails to encourage them to also become stewards of our ecosystem.



**2580 VOLUNTEER HOURS
VALUED AT \$88,864**





Capital Improvements

For our dedication to youth services, we were approved to receive funds from the sale of the Denver Broncos to be spent toward capital improvements. We began by addressing accessibility concerns - paving the parking lot and adding two ADA spaces. We also started improving safety security measures in the classroom and offices through safety improvements in our garage workshop, replacement of the back deck, pumping the septic tank, asbestos abatement in preparation for demolition of two structures in the park, and a conceptual design for the new classroom.



\$560,209 IN CAPITAL FUNDS 2023-2025

Restoration Work Has Begun

In recognition of the current degraded state of the Majestic View wetlands, we have partnered with Ducks Unlimited to begin restoration work for wetland conservation. With grant support from Colorado Parks & Wildlife, Colorado Water Conservation Board, and National Association of Water Conservation of America we've received restoration grants for 2024-2026 to work on invasive species removal, native revegetation, and shoreline mitigation.



\$180,000 IN RESTORATION GRANTS



Summer Camps

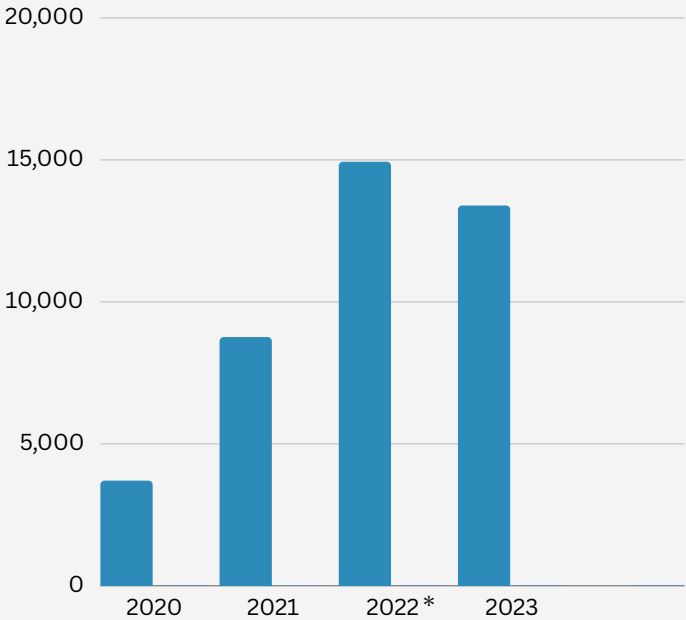
The highlight of 2023 was the first year of week-long, full-day summer camps between June through August. We served 675 campers over the course of nine weeks, with more on the waitlist. Overall feedback from campers and their families was overwhelmingly positive for the second year in a row. One camper told us after her first week with us,

“I want to come back every year until I’m old!” -6 year old camper

Statistics & Attendance

Visitor attendance stayed stable from 2022 to 2023, even with a reduction in Saturday public hours.

Key Indicator	Data	Outcome
Overall Attendance	Youth: 5927 Adults: 7522 Total: 13,449	<ul style="list-style-type: none">Fewer people due to no Saturday Public HoursTop 4 programs:<ul style="list-style-type: none">Summer CampsAstronomyNature PlaydatesMeditations
Volunteer Support	2580 Hours Valued at \$88,864	<ul style="list-style-type: none">With the many projects and programs in 2023, the park and Nature Center saw the highest volunteer hour total to date
Number of Functions	388 functions 2.5% cancellation rate	<ul style="list-style-type: none">Lowest cancellation rate to date (primarily due to weather or low registration)



1,487

fewer people in attendance, primarily from reduced Saturday Walk-In Hours

**Due to a formula error, some adult walk in visitors were counted twice in 2022's final report. Actual total attendance for 2022 was 14,936 people.*



Grants, Donations, and In-Kind Support

Our grants and in-kind support has been instrumental in accomplishing all the tasks we have completed in 2023. From safety and accessibility improvements to teaching our many programs to simply donating supplies, we appreciate all the support our community has given to the Nature Center.

535
hours

TEACHING

School programs, outreaches to schools, public programs, summer camp

GARDENING

Weeding, planting, maintaining, cleaning, updating

401
hours

189
hours

HOSTING

Front desk services at the Nature Center

MONITORING WILDLIFE

Through wildlife cameras and monarch butterfly surveys

112
hours

39
hours

ANIMAL AMBASSADOR CARE

Caring for Wiggles, Turbo, Toby, Lucy, Little Dude, and Bubbles

INTERPRETIVE DISPLAYS

Updating and creating new displays

108
hours

378
hours

NATURE CENTER PROJECTS

Building maintenance, meeting with contractors, taxidermy work, classroom design and so much more!

OUTREACH

Booths at large events at the NC and around the City

140
hours

556
hours

HABITAT RESTORATION

Invasive species removal, trail maintenance and building

Volunteers

In 2023, volunteers contributed 2,580 hours to the mission of Majestic View Nature Center – connecting people to nature through the demonstration garden, exhibits, outreach, programs, and more.



**2580 TOTAL HOURS
VALUED AT \$88,864**



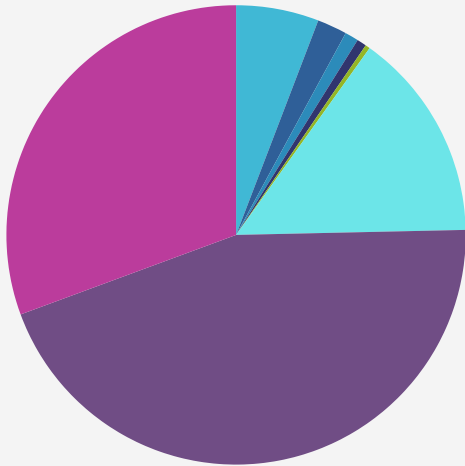
Monetary & Material Donation Breakdown

2023	Donation	Value
SCFD Grant	Tier III Grant for 2023	\$20,019.60
Donations	Visitors cash donations	\$1,071
Anna Hoover	craft supplies & projector screen	\$675
Terra Pittenger	books	\$50
Dang Shoffner	card games & REI waterbottles	\$225
Ryan Bartlett	Bee ID guide book	\$9.95
Jack Potter	water cooler	\$20
Dudley Weiland	books	\$15
Anonymous	nat geo books, moose antler paddle, colored pencils	\$225
PCL Construction	Concrete pad and shelves in garage	\$15,000
Perkins & Will	Conceptual design for Classroom and 3D Model	\$66,185

**TOTAL GRANTS, DONATIONS, & IN-KIND
VALUE: \$191,491.83**

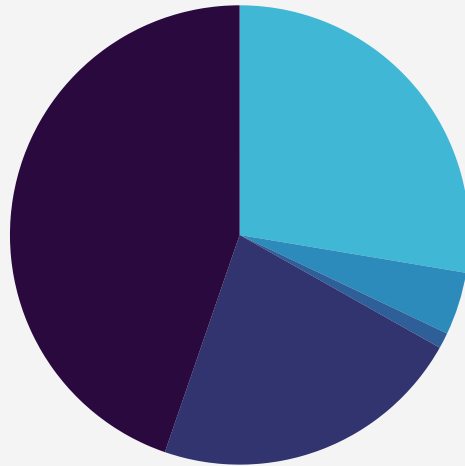
Financials

Revenue



75.3% City of Arvada
***Capital One-Time Funds**
14.% Programming
5.8% Grants
2.1% Lease Rent
1% Rentals
0.7% Gift Nook/Sales
0.3% Donations

Expenses



44.7% Capital Improvements
22.1% Management & General
27.6% Education and Outreach
4.4 % Facilities & Land Management
1.1 % Marketing

Majestic View Nature Center takes pride in utilizing the expertise of staff and volunteers to reduce costs and striving to purchase only minimal expendable materials required for programs. Staff and volunteers take excellent care of the teaching supplies and materials, reusing most equipment for years. Overall expenditures did not exceed revenues.

Some expenses, such as the Assistant Nature Center Director salary, are supported through the City of Arvada's Water Utilities and Storm Water budgets, not shown here.

Grant revenue came from the Scientific and Cultural Facilities District to be spent towards the youth programming—primarily for education staffing and program materials.



Water Education Report

Nature, and everything that lives in it, requires water. Majestic View staff incorporates water education into as many programming opportunities as possible, from conservation to stormwater protection. In addition to the highlight below, Nature Center staff and volunteers dedicated over 556 hours to habitat restoration in the surrounding wetlands of the park and in watersheds across the City.



Programs

The Nature Center directly reached 529 students and 95 adults with water programming (Water Wise outreach, Enviroscope, and Wetland Discoveries programs). These programs focus on water quality and conservation with hands-on activities.

Several public programs, events, and outreach booths also included water quality and conservation topics; such as Earth Day, garden workshops, and more.

Exhibits

Three hands-on, inquiry-based displays were interacted with by approximately 3615 Nature Center walk-in visitors. These exhibits talk about stormwater runoff, watersheds, wetland habitats and more.



Camps

During the Nature Center's second year of summer camps, one week was dedicated to water education. Campers learned about where water comes from, how to keep it clean, who uses it and how to conserve this limited resource.





Our Team

Majestic View Staff

Anna Hoover, Nature Center Director
Jessica Colby, Nature Center Assistant
 Director, Summer Camp Director
Mindy Debner, Nature Center Specialist
Brett Hodges, Site Specialist
Marissa Copan, Program Coordinator
Maggie Peck/Salem Keller, Summer
 Instructors
Jess Fangman, Seasonal Educator

Volunteers 200+

Bill Kunz
Megan Andrews
Paul Lipchak

Volunteers 100-199 Hours

Terra Pittenger
Tom Hartke

Volunteers 50-99 Hours

Alice Hansen	Georgia Magnera
Brenda Sterns	Steve Holmes
Charlie Krinsky	Susanne Koxholt
Cindy Hall	

Volunteers 15-49 Hours

Bella Frandina	Marcia Becker
Brenda Sterns	Randy Sterns
Cathy Fennelly	Ted Hibbs
Jay Gubersky	Zach Janota
Joe Kelly	
Jo Follett	
Kelly Selva	
Lydia Bryan	
Madeus Frandina	

Volunteer Groups

Latter Day Saints
JeffCo Open Space Trail Volunteers
Two Roads Charter School



Total Hours Volunteered: 2,580

Our Partners

Friends of Majestic View Nature Center
Scientific and Cultural Facilities District
Ducks Unlimited
Arvada Sunrise Rotary
Colorado Parks & Wildlife
Jefferson County Open Space
JeffCo Open Space Foundation
Standley Lake Nature Center
Monarch Larva Monitoring Project
National Wildlife Federation
APEX
Arvada Park Advisory Committee
Standley Lake Stargazing
Two Ponds National Wildlife Refuge
Audubon Rockies
Colorado Avian Raptor and Rehabilitation
Institute
Frontline Farming
Festivals Commission
Perkins & Will
PCL Construction

Key Sponsors



We are incredibly grateful for the community support and commitment to our programming. We look forward to new innovations, opportunities, and ways to share our passion for nature.

THANK YOU!



Majestic View Nature Center
7030 Garrison Street, Arvada, CO
majesticviewnc.org